

Beirut Arab University • Faculty of Medicine

**Beirut Campus**

Tel: +961 1 300110

Fax: +961 1 818402

**Tripoli Campus**

Tel: +961 6 218400

Fax: +961 6 222800

**Debbieh Campus**

Tel: +961 7 985858

Fax: +961 7 985060

**Bekaa Campus**

Tel: +961 8 542051

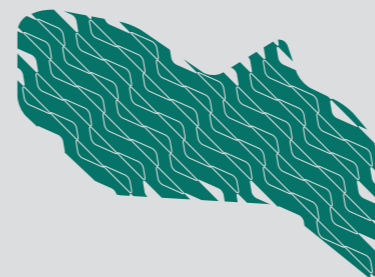
Fax: +961 8 544051

[bau@bau.edu.lb](mailto:bau@bau.edu.lb) - [www.bau.edu.lb](http://www.bau.edu.lb)

Issued during the academic year 2016 - 2017



جامعة بيروت العربية  
BEIRUT ARAB UNIVERSITY



the guide  
faculty of  
Medicine

Vision Innovation Continuity

## Faculty of Medicine

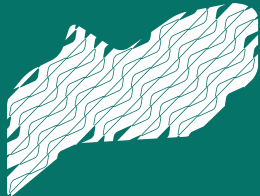


# Dean's Message \

The Faculty vision is to provide Innovation and Excellence in medical education and research that responds to the community needs and conforms with the international standards of the 21<sup>st</sup> century. We are committed to help students pursue their academic and life goals by promoting an environment that fosters academic success and professional development. We are convinced that the modern medical graduate does not simply need to recall facts but instead he needs to access, evaluate, and use new information.

Our curriculum encourages self-learning and continuous education through a student centered integrated strategy. We believe that our role is to prepare students to shape the future. Hence, our graduate must acquire the habit and the discipline to organize information systematically, to develop concepts, and to apply them. Thus, the most valuable tool for tomorrow is "the ability to think critically and creatively".

---



Faculty Guide  
*Dean's Message*  
page. 2



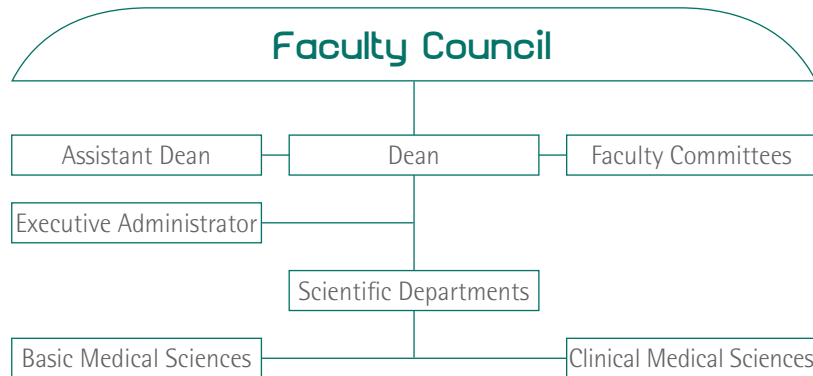
**Prof. Najlaa Mashaal**  
*Dean of*  
Faculty of Medicine

# Organizational Structure \

Faculty Guide  
*Organizational Structure*  
page. 3

The Faculty of Medicine consists of different areas of specialties: Basic Medical Sciences and Clinical Medical Sciences. The Department of Basic Medical Sciences includes Anatomy & Histology, Clinical Physiology, Medical Biochemistry, Basic Pathology, Medical Microbiology & Immunology, Medical Parasitology, and Clinical Pharmacology. The Department of Clinical Medical Sciences includes Internal Medicine & Medical Subspecialties, General Surgery & Surgical Subspecialties, Pediatrics, Family Medicine, Obstetrics & Gynecology, and Community & Preventive Medicine.

The Organizational Chart of the Faculty is as follows:



# Academic Degrees \ Investing in the Future

Faculty Guide  
Academic Degrees  
page. 4



- Ophthalmology
- Doctorate Degree in**
- Medical Physiology
  - Internal Medicine
  - General Surgery
  - Orthopedic and Traumatology
  - Pediatrics
  - Obstetrics and Gynecology
- Professional Certificates**

The faculty offers residency and fellowships programs in collaboration with affiliated hospitals.

---

The Faculty of Medicine offers:

**Bachelor Degree in Medicine & Surgery**  
**Master Degree (MSc) in**

- Medical Physiology
- Internal Medicine
- General Surgery
- Orthopedic & Traumatology
- Pediatrics
- Obstetrics & Gynecology

# Undergraduate Programs \ Making a Smart Choice

Faculty Guide  
Undergraduate Programs  
page. 5

The Faculty of Medicine BAU M.B.B.Ch Curriculum follows the international criteria in medical education being:

- Outcome Competency-based
- Student Centered
- Integrated System-based
- Early Introduction of Clinical Skills
- Continuous Medical Education

Faculty	-	<b>Bachelor</b>	
		Total Credit Hours	Min No. of Years
Medicine	-	204	6



## Admission Requirements

To be accepted for an Undergraduate Degree, applicants must:

- Hold the official Lebanese Secondary School Certificate in life sciences or an official equivalent;
- Successfully pass an English language proficiency exam, **an Aptitude Test (Thinking Skills, Scientific Knowledge: Biology, Physics, Chemistry)** and sit for an Interview.

## Graduation Requirements

To receive a Bachelor Degree in Medicine and Surgery (M.B.B.Ch), a student must satisfactorily complete 204 credit hours with an overall minimum Cumulative Grade Point Average (CGPA) of 2.0 + International Computer Driving License (ICDL). The following table summarizes the number of credit hours required for Bachelor-granting programs at the Faculty:

Program	University Requirements		Faculty Requirements Mandatory Courses	Total Credit Hours
	Mandatory Courses	Elective Courses		
Medicine	5	9	190	204

Faculty Guide  
Undergraduate Programs  
page. 6

## Career Opportunities

Resident / Fellow in programs offered by different hospitals

### Consultant in

- Hospitals
- Specialized Centers & Private Clinics
- Primary Health Care Centers
- Schools
- National & International Health Organizations

Assistant / Instructor at Universities



# Graduate Programs \

## Admission Requirements

### Master's Degree

Applicants to a Master's Degree must hold a Bachelor Degree with a minimum CGPA of 2.33. Master's Degree in clinical specialties requires a successful completion of at least one year in a hospital residency program in the proposed field of specialization. Learning methods include, in addition to lectures, student centered learning activities and clinical training.

### Doctorate Degree

Applicants to a PhD Degree must hold a Master's Degree from BAU or any other recognized university that qualifies the student to pursue a PhD with a minimum CGPA of 3.00. Doctorate Degree in clinical specialties requires, in addition to Master's Degree in the specialty, a successful completion of at least three years in a hospital residency program in the proposed field of specialization. Learning methods include, in addition to lectures, student centered learning activities, workshops, and clinical training.

### Specialty Programs

Beirut Arab University Medical doctors wishing to apply for the residency program should successfully pass: The International Foundations of Medicine Clinical Science Examination (IFOM CSE) that's developed by the National

Faculty Guide  
Graduate Programs  
page. 7

Board of Medical Examiners (NBME), USA, and Personal interviews.

## Graduation Requirements

### Master's Degree

The student has to successfully complete the required credit hours in the courses with a CGPA of no less than 2.33 and successfully defend the thesis in no less than two years from the date of registration in the program.

### Doctorate Degree

The student should successfully complete the required credit hours with a CGPA of no less than 3.00 in the course-work and should successfully defend the dissertation in a period of no less than three years from the date of registration in the program.

CGPA of 2.33 and 3.00 are equivalent to 73% and 80% respectively for the academic year system.

---

# Programs & Degrees \

Faculty Guide  
*Programs & Degrees*  
page. 8

## Program

Medicine

Master	
Total Credit Hours	Min No. of Years
40	2

Doctorate	
Total Credit Hours	Min No. of Years
54	3

# Residency & Fellowship Programs \

Faculty Guide  
*Residency & Fellowship Programs*  
 page. 9

Medical doctors graduating from BAU wishing to apply for the residency and fellowship program should successfully pass the International Foundations Of Medicine Clinical Science Examination (IFOM CSE) that's developed by the National Board of Medical Examiners (NBME), USA.

Level	Specialties	No. of Years	Level	Specialties	No. of Years
Residency	Internal Medicine	3	Fellowship	Pulmonary & Critical Care	3
	Laboratory Medicine	4		Endocrinology	2
	Radiology	4		Cardiology	3
	Psychiatry	5		Gastroenterology	2
	Emergency Medicine	4		Nephrology	2
	Pediatrics	3		Hematology & Medical Oncology	3
	General Surgery	5		Infectious Disease	2
	Obstetrics & Gynecology	4		Emergency Medicine	2
	Orthopedic Surgery	5			
	Urology	5			
	Anesthesia & Reanimation	4			
Otorinoryngology	4				

# Academic Policy \ Supporting Your Steps

Faculty Guide  
*Academic Policy*  
page. 10

The Academic Policy helps students understand their rights and responsibilities and successfully complete all required academic tasks.

## **Academic Advising**

Academic Advising is a shared responsibility; it entails a dynamic relationship between the advisor and the student. The advisors are committed to help students make a successful transition to the university and develop an appropriate academic plan. Advising is available to all students before the registration process to assist them in choosing a major, selecting courses, and completing all graduation requirements.

## **Code of Ethics**

The Code of Ethics is designed to establish an environment of honor and trust within the University. BAU's Code of Ethics aims at promoting the growth of ethically responsible students through adherence to the highest standards of academic integrity, ethics, and morals.

---



# Learning Facilities \ Inspiring Your Learning

Faculty Guide  
Learning Facilities  
page. 11

## Library

The Medical Library supports the Faculties of Pharmacy, Medicine, and Health Sciences. Its collection consists of (17000) Books and (9000) E-books, (70) Multimedia, (34) Theses and Dissertations. In addition, the collection constitutes to AccessMedicine, Medline Complete, Smart Image Based, Dynamed, and up-to-date Databases.

## Laboratories

- Anatomy Lab
- Histopathology
- Computer Lab
- Clinical Physiology Lab

## Centers

- Health Care Center: It's a center that aims to improve health & wellbeing of the community by providing quality accessible health care services. Moreover, it will be a center for clinical education and research for BAU students.
- Clinical Training Center: It has been developed with the aim of allowing students to develop and mature their clinical skills abilities such as communication skills, history taking, physical examination and analytical thinking in dealing and diagnosing patients with their diseases.



## University Facilities and Services

All registered students have access to University facilities:

### Health Care

- Medical Clinic
- Dental Clinic
- Nutrition Clinic
- Physical Therapy Clinic
- Psychological Clinic

### Technology Services

- Portal (iConnect)
- Webmail
- Phone and Mail Services
- Campus Wi-Fi
- ATM

### Dorms (Debbieh Campus)

### Cafeterias

### Debbieh Astronomical Observatory

### Transportation and Parking

### Legal Clinic

### Cultural Campaigns

## Teams & Clubs

(Beirut Campus)

### Teams

Basketball (Male), Basketball (Female), Football, Futsal, Volleyball (Male), Volleyball (Female), Handball (Male), Archery, Chess, Muay Thai, Table Tennis, Swimming.

### Clubs

Drama, Music, Folk Dance, Zumba, Scouts, Lebanese Red Cross Youth Center-BAU.

(Debbieh Campus)

### Teams

Basketball (Male), Basketball (Female), Football (Male), Futsal (Male), Volleyball, Handball (Male), Chess, Table Tennis, Kick Boxing, Body Building, Tennis, Astronomy, Wrestling (Male), Athletics, Badminton.

### Clubs

Drama, Music, Zumba, Scouts, Dance.

(Tripoli Campus)

*Teams*

Basketball (Male) ,Basketball (Female), Football (Male), Volleyball (Male)  
Volleyball (Female), Table Tennis (Male), Kick Boxing (Male), Body Building,  
Cardio, Aerobics.

*Clubs*

Drama, Music, Arts, Dance, Social, TEDx, Entrepreneur, Environmental, and  
Adventure.

---



## Faculty Contacts

**Jana Adada**

*Executive Administrator*

(Phone) +961 1 300110

(Ext) 2631

(Email) [medicine@bau.edu.lb](mailto:medicine@bau.edu.lb)



